

# **BSB Corridor Aesthetic Design**

Fort Wright and Fort Mitchell Interchanges



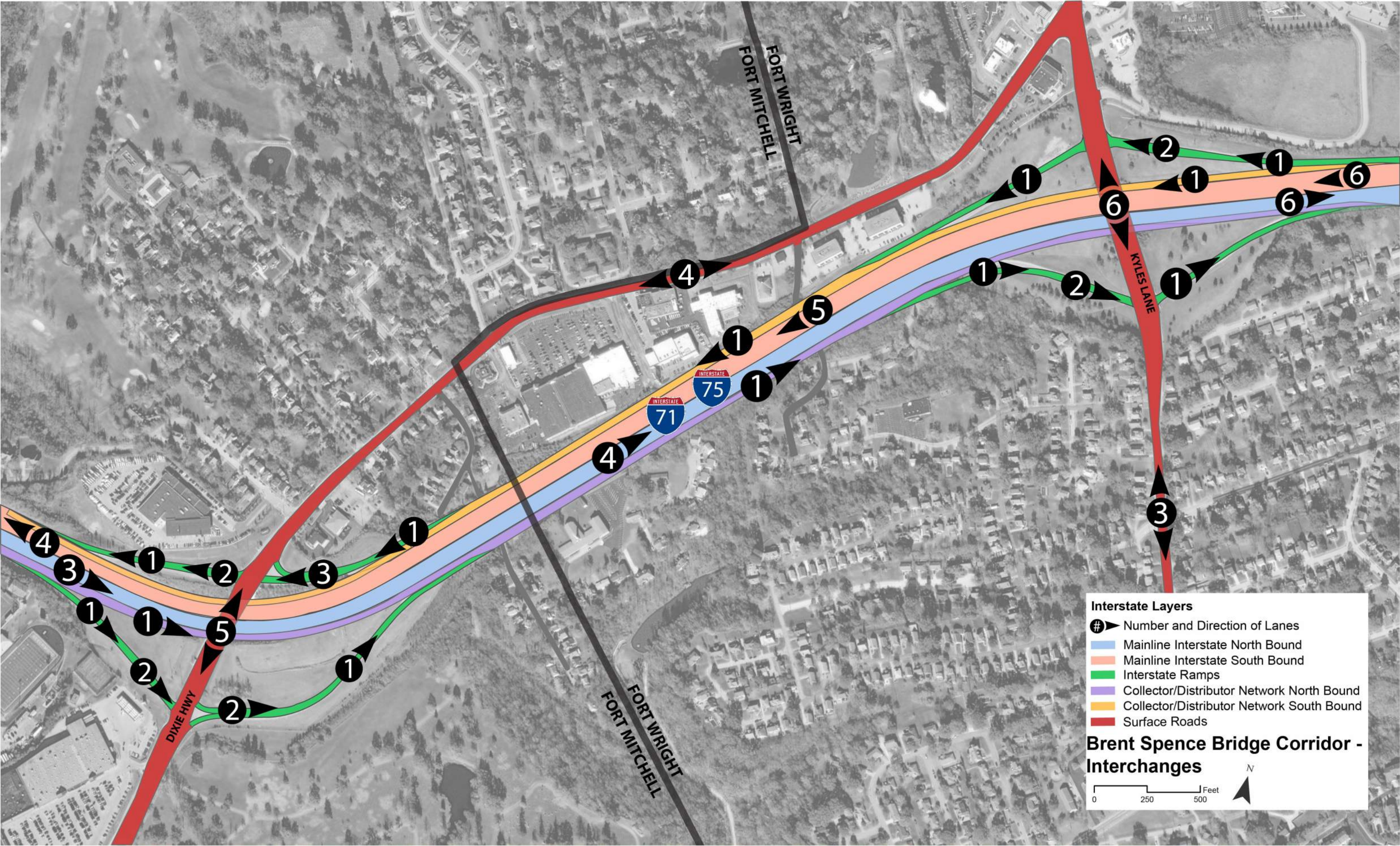
# PROJECT OVERVIEW

## Opportunities

- **Improve** aesthetics of interchanges in Fort Mitchell and Fort Wright
- **Create** cohesive design treatments across both interchanges and the interstate between them
- **Make** bold visible signage to create gateways to both communities
- **Create** place specific Gateways that are related but unique.

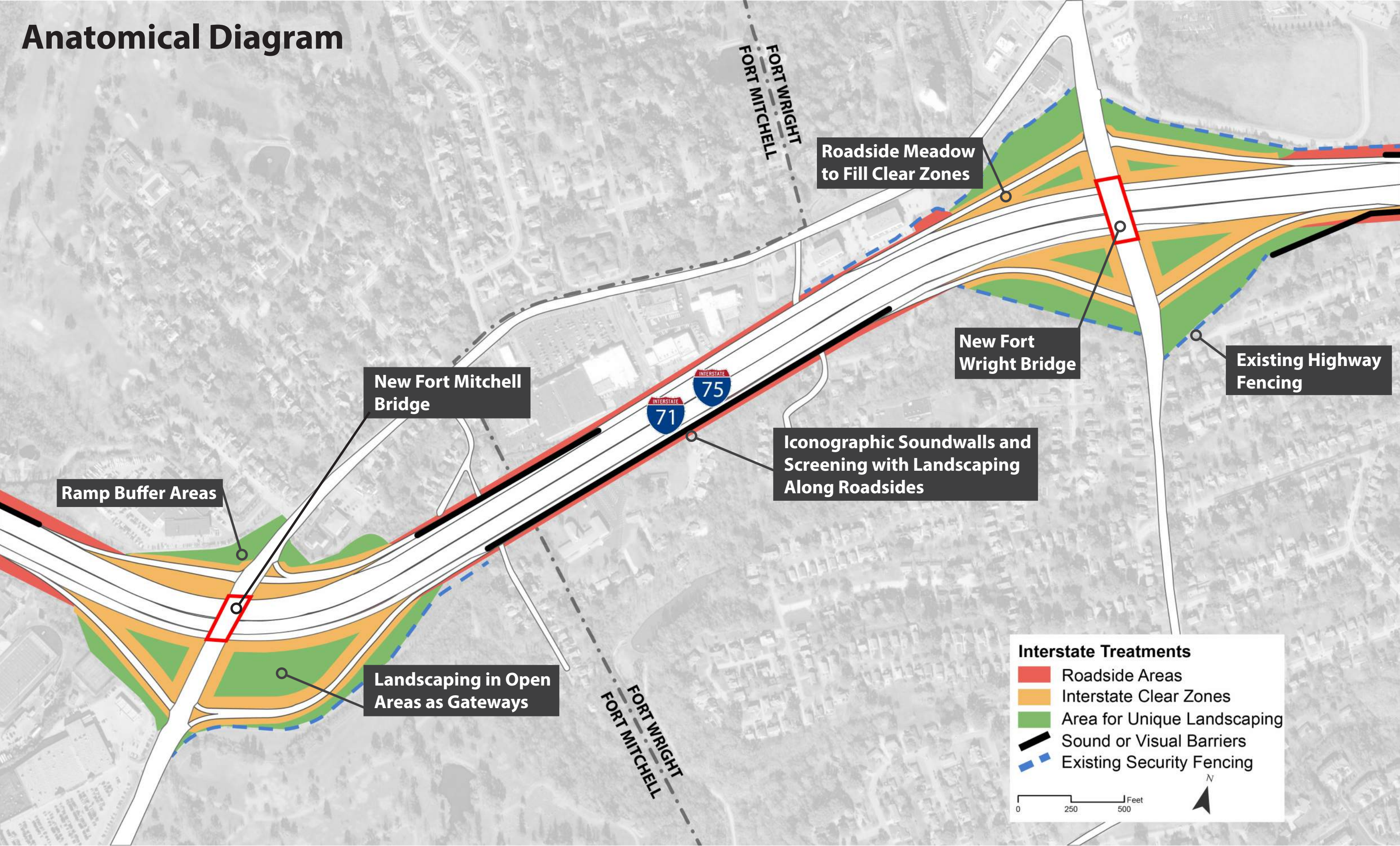








# Anatomical Diagram

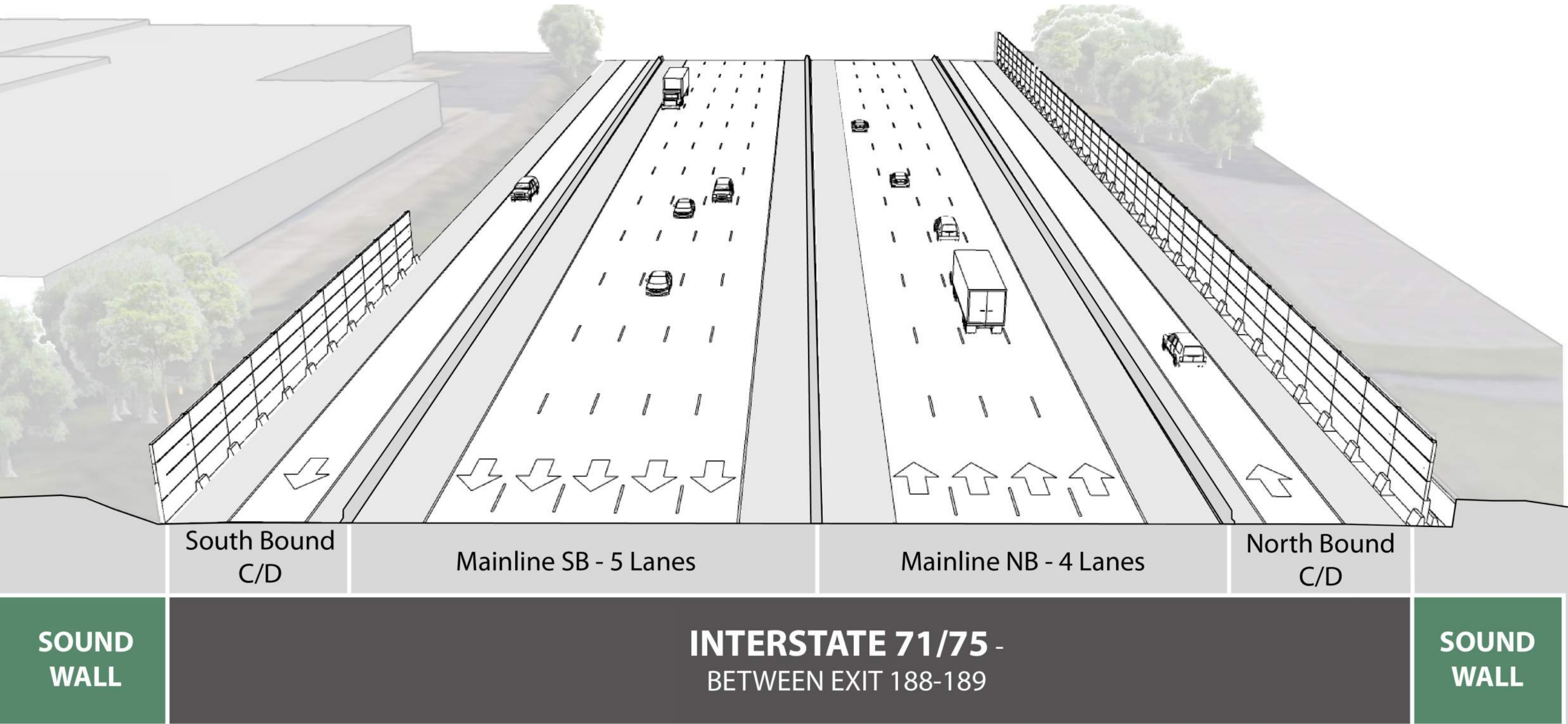




# Road Sections



# I-71/75 Section Typical - 16' Soundwalls\*

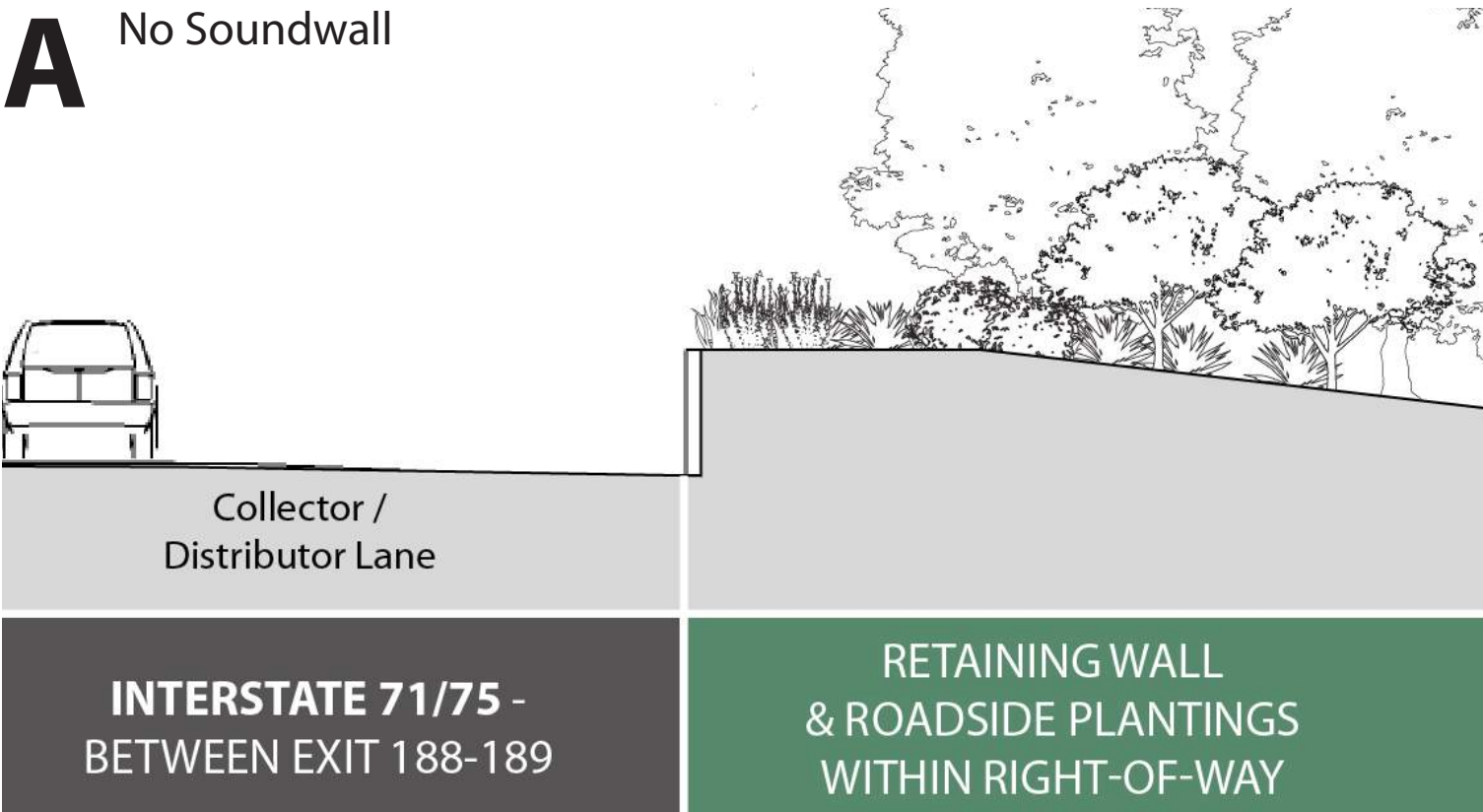


*\*Soundwalls will vary in height and location.*  
*\*Exact details will be determined during the design build phase*

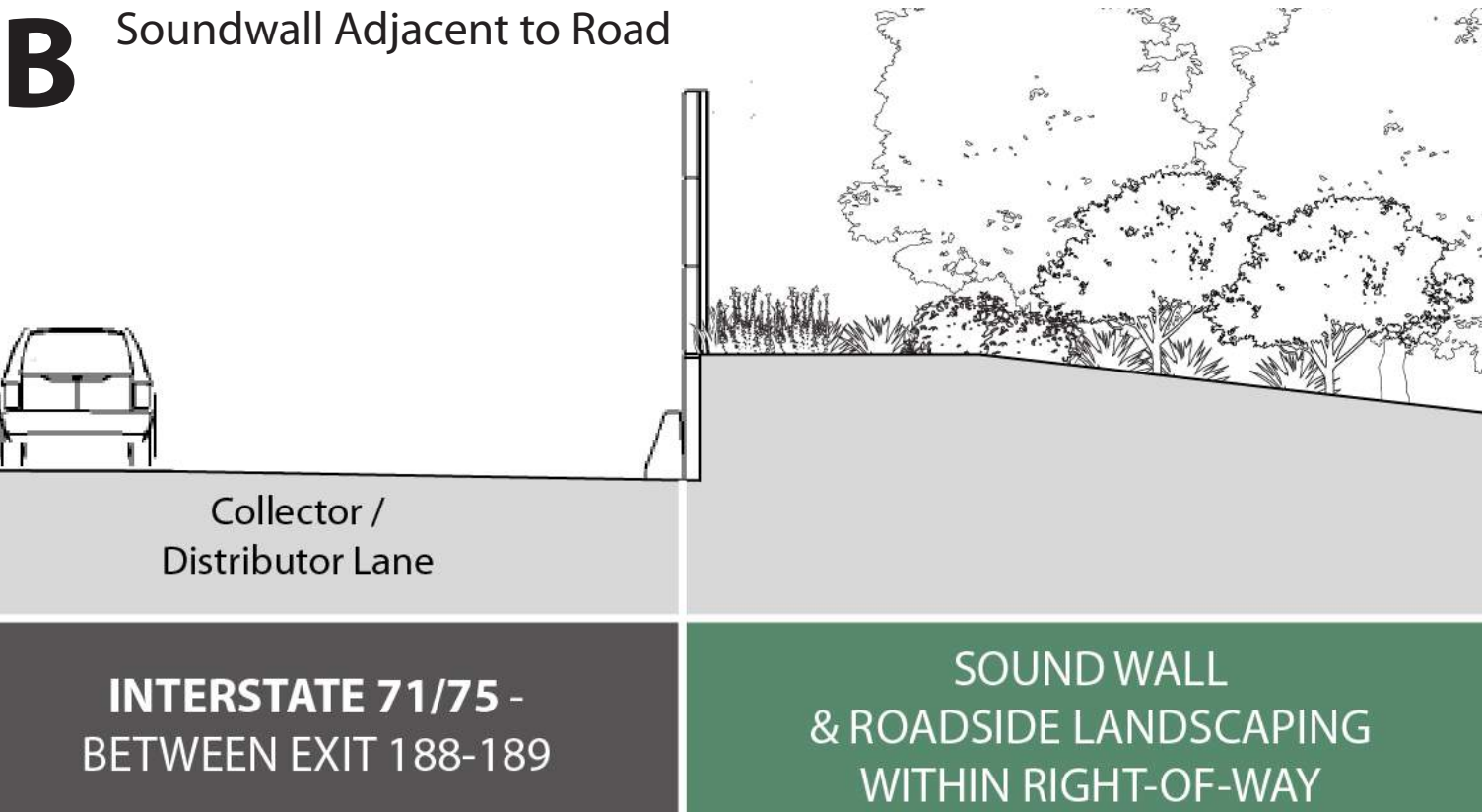


# I-71/75 Section Roadside Area Strategies

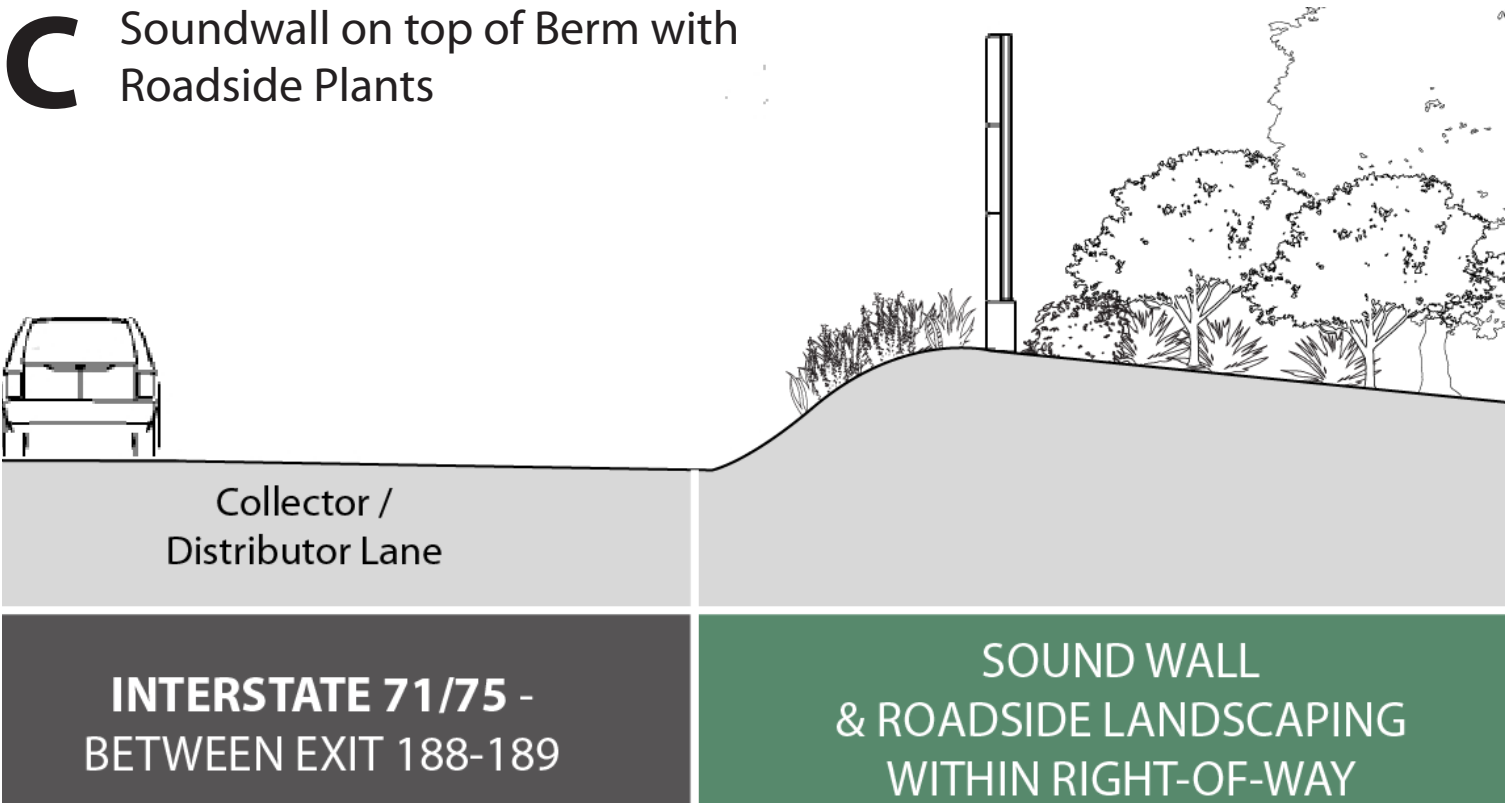
**A** No Soundwall



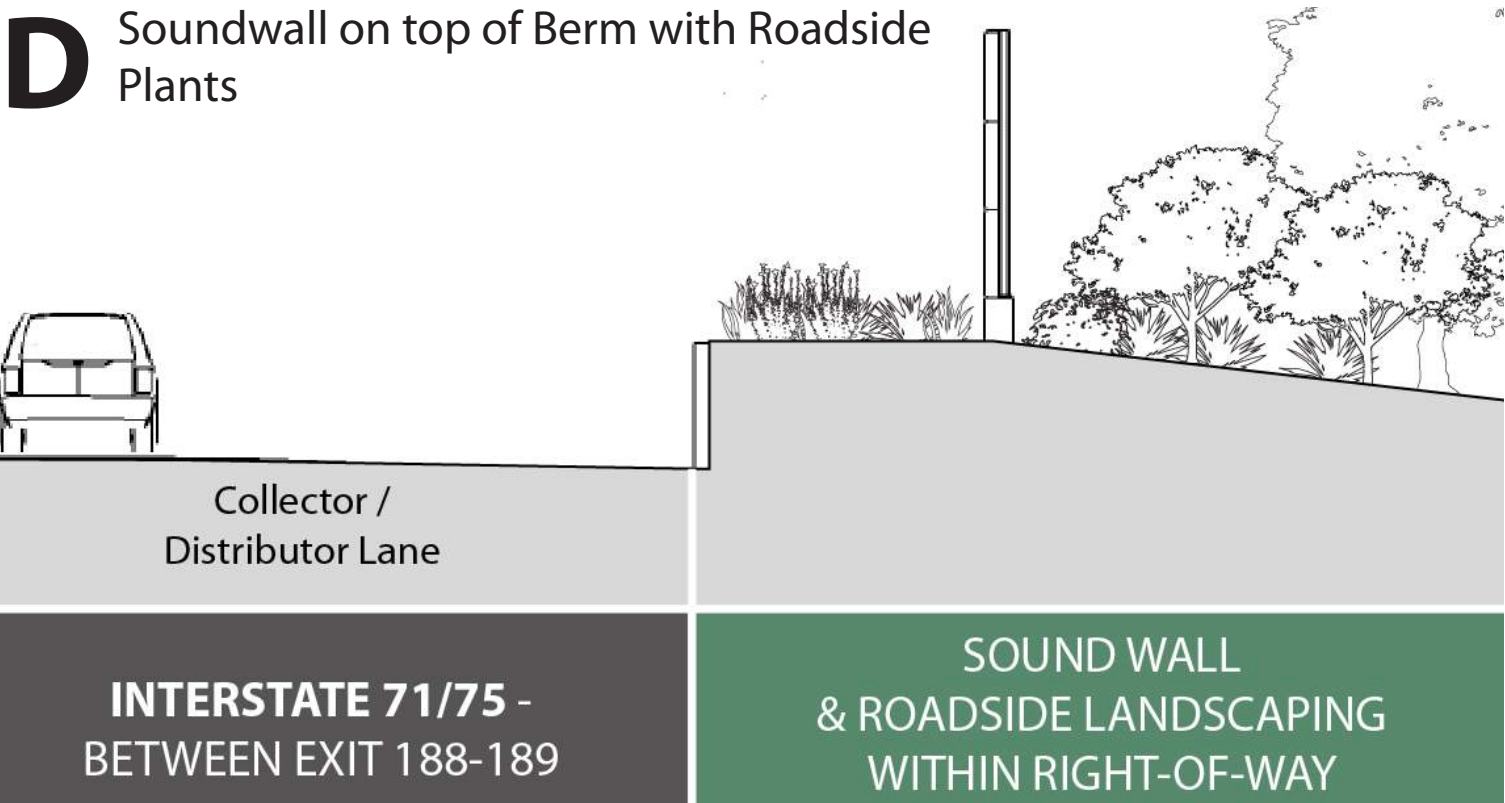
**B** Soundwall Adjacent to Road



**C** Soundwall on top of Berm with Roadside Plants



**D** Soundwall on top of Berm with Roadside Plants



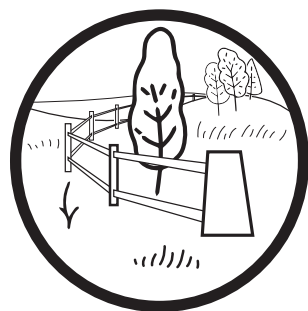


# **Proposed Interchange Improvements**



# Balance of Unifying and Diversifying Elements

## Landscape



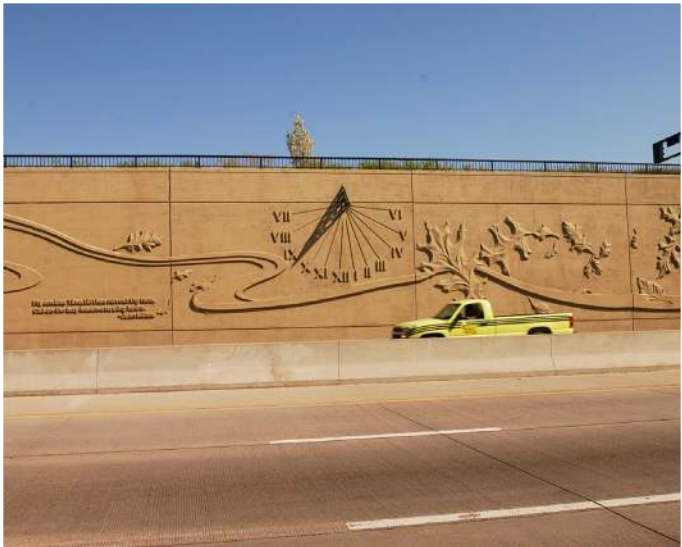
## Bridge



## Signage



## Other





# Local Material Palette

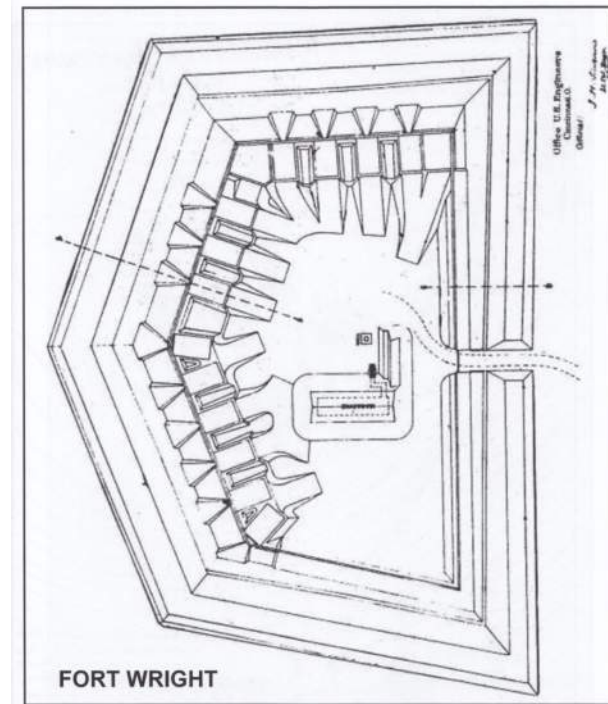




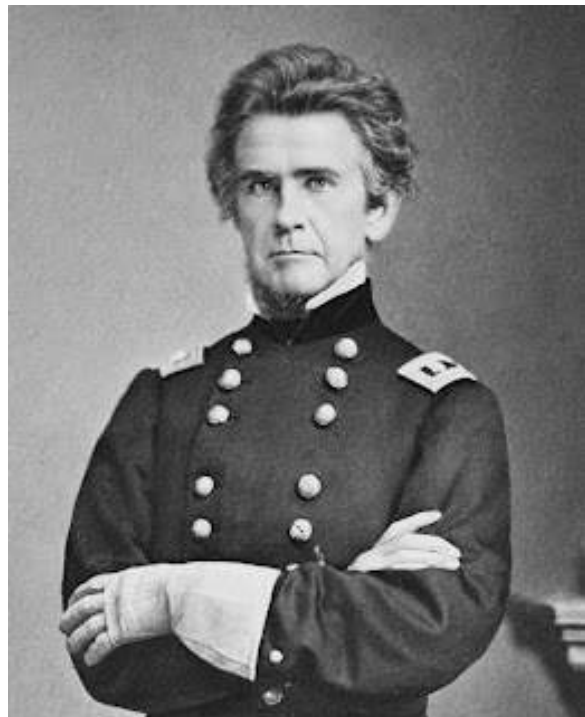
# Fort Wright & Fort Mitchel



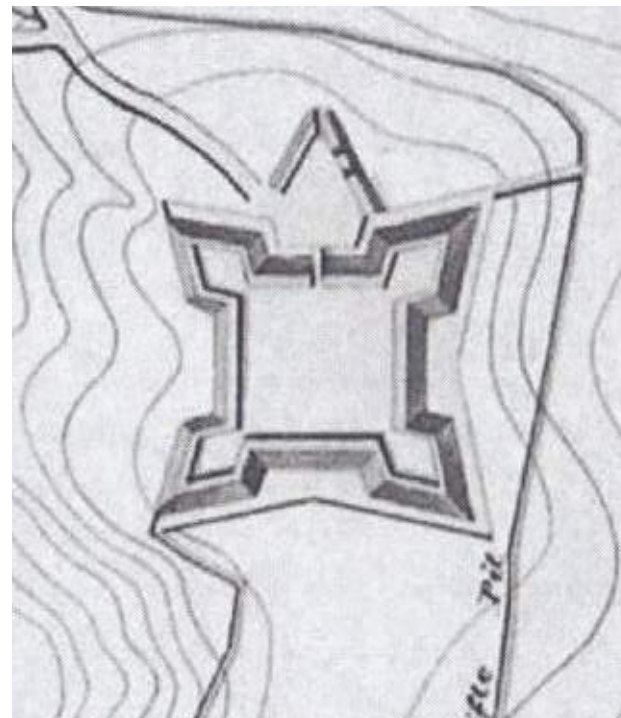
Major General Horatio Gouverneur Wright



Fort Wright  
Typology: Hexagonal Redoubt



Major General Ormsby McKnight Mitchel



Fort Mitchel  
Typology: Bastioned Fort





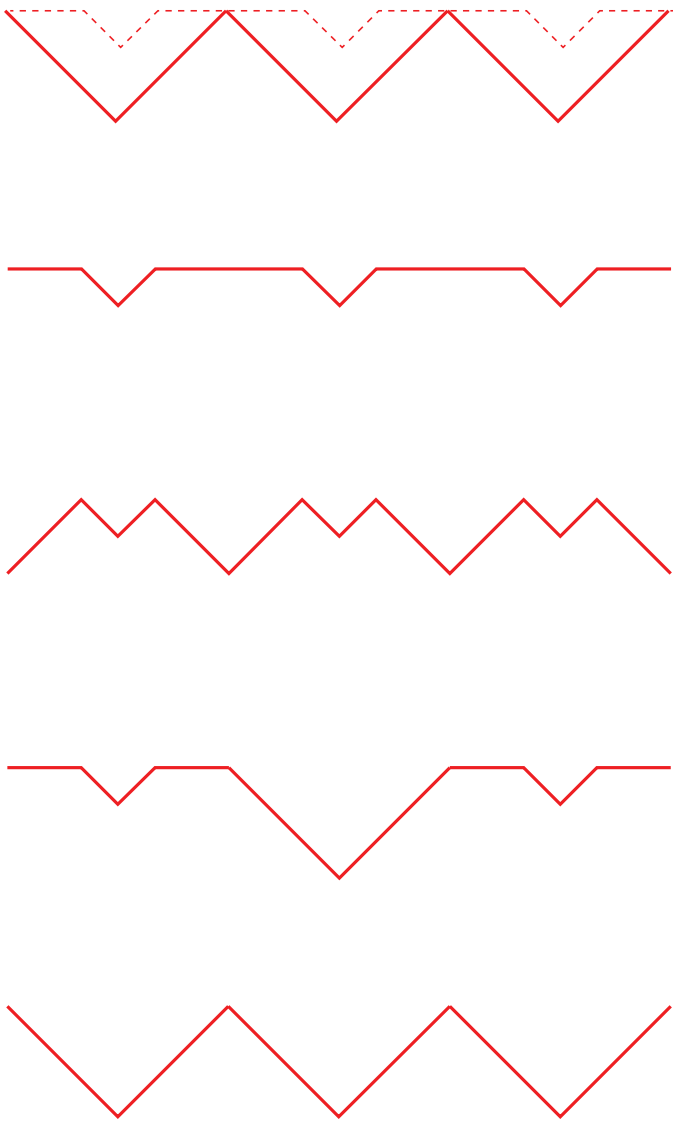
# Reinterpreting the Fortification: GEOMETRY



Fort Mitchell Plan



Translation & Abstraction of Geometry



New Geometric Expression



# **Fort Wright Interchange Improvements**



# Fort Wright Bridge











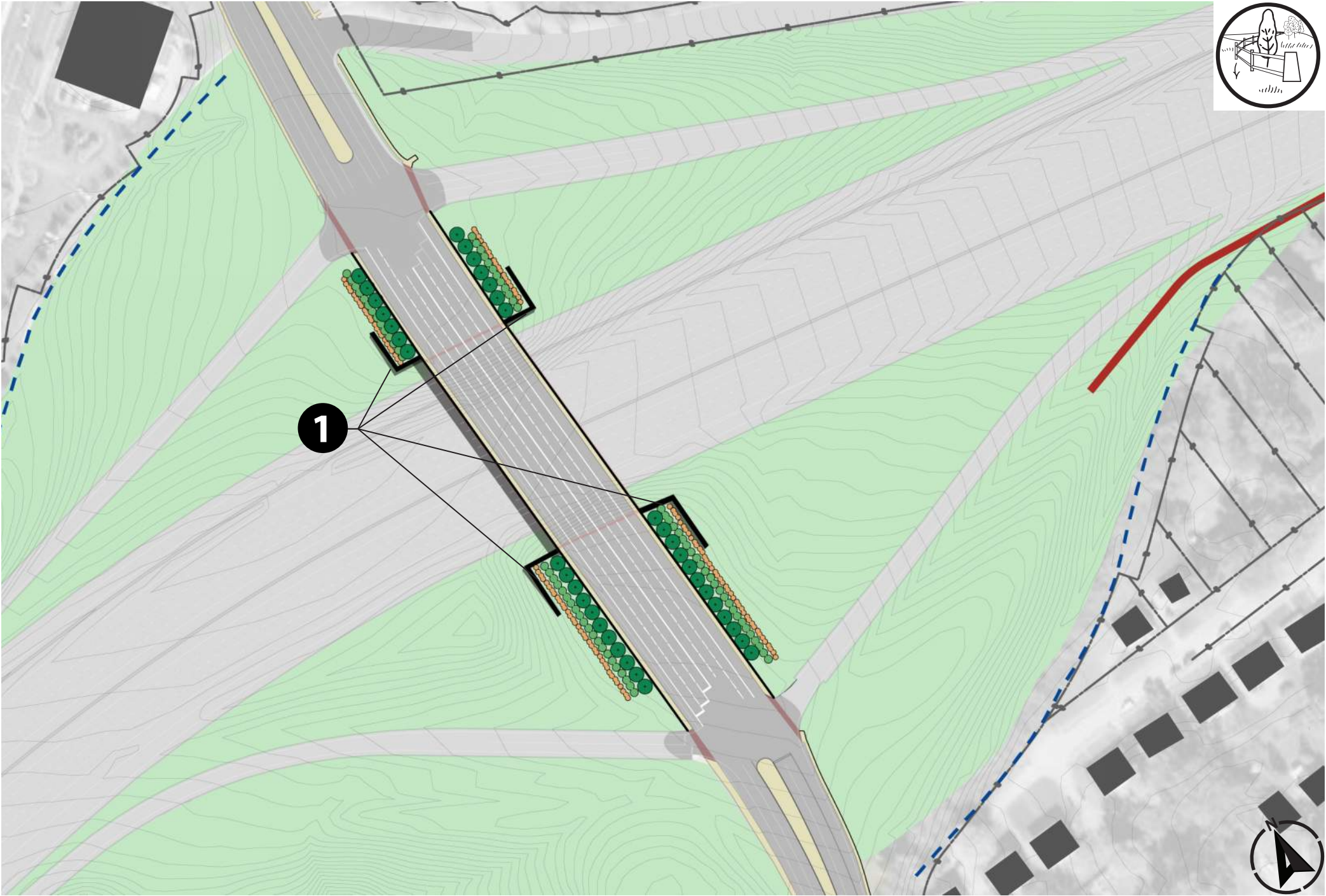
**Southbound View**



# Kyles Lane (Fort Wright)

## 1 Planted Landscape Abutment Wall

- Sound Walls
- Existing Highway Fence
- Abutment/Retaining Wall
- Planting Beds





# Kyles Lane (Fort Wright)

- 1 Planted Landscape Abutment Wall
- 2 Composite White Fence with Stone Pillars
- 3 "Fort Wright" Community Sign Pillar

 Sound Walls

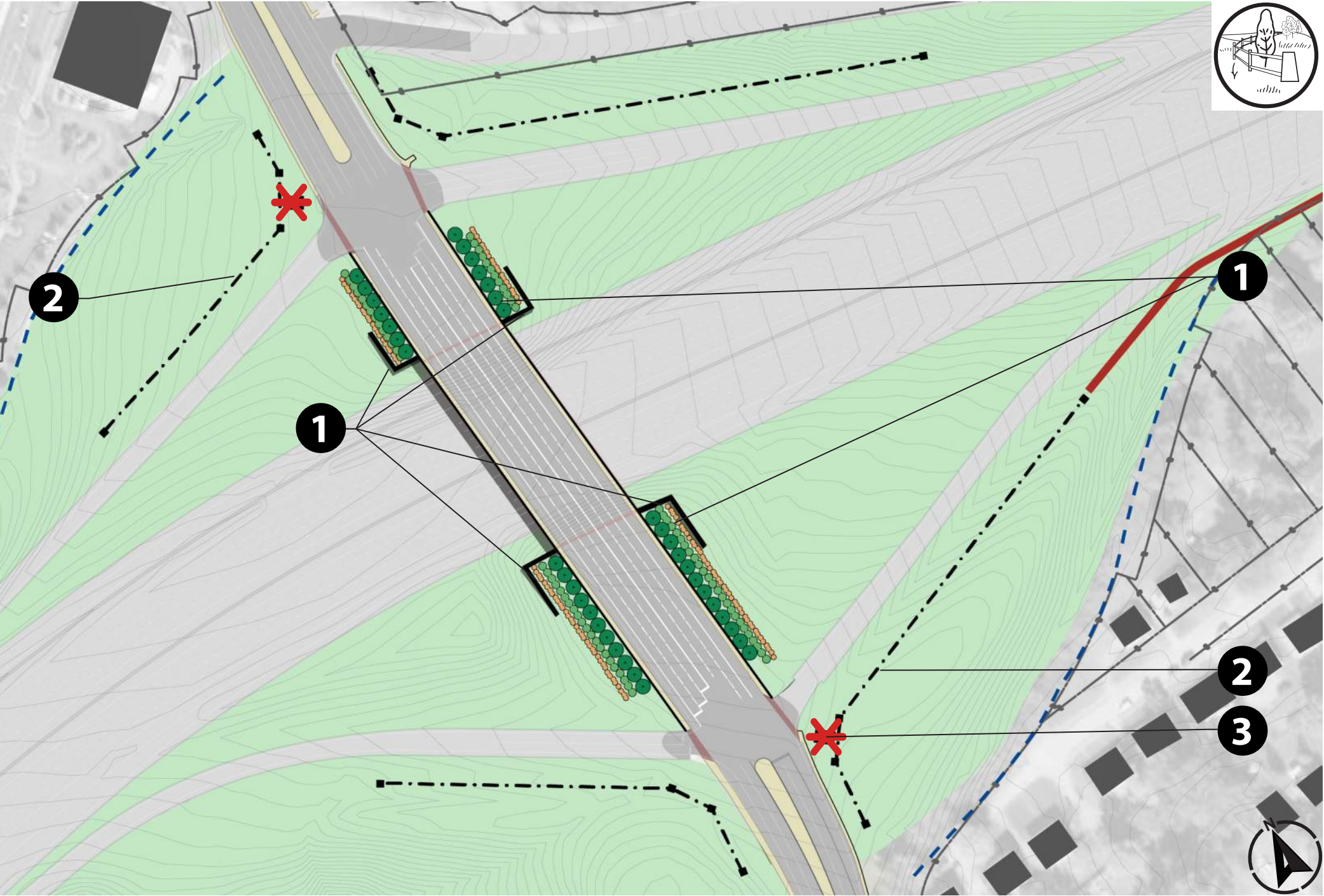
 Existing Highway Fence

 Abutment/Retaining Wall

 Planting Beds

 Composite White Fencing with Stone Pillars

 Community Sign Post





# Kyles Lane (Fort Wright)

- 1 Planted Landscape Abutment Wall
- 2 Composite White Fence with Stone Pillars
- 3 "Fort Wright" Community Sign Pillar
- 4 Cluster of Autumn Blaze Maples

 Sound Walls

 Existing Highway Fence

 Abutment/Retaining Wall

 Planting Beds

 Composite White Fencing with Stone Pillars

 Community Sign Post

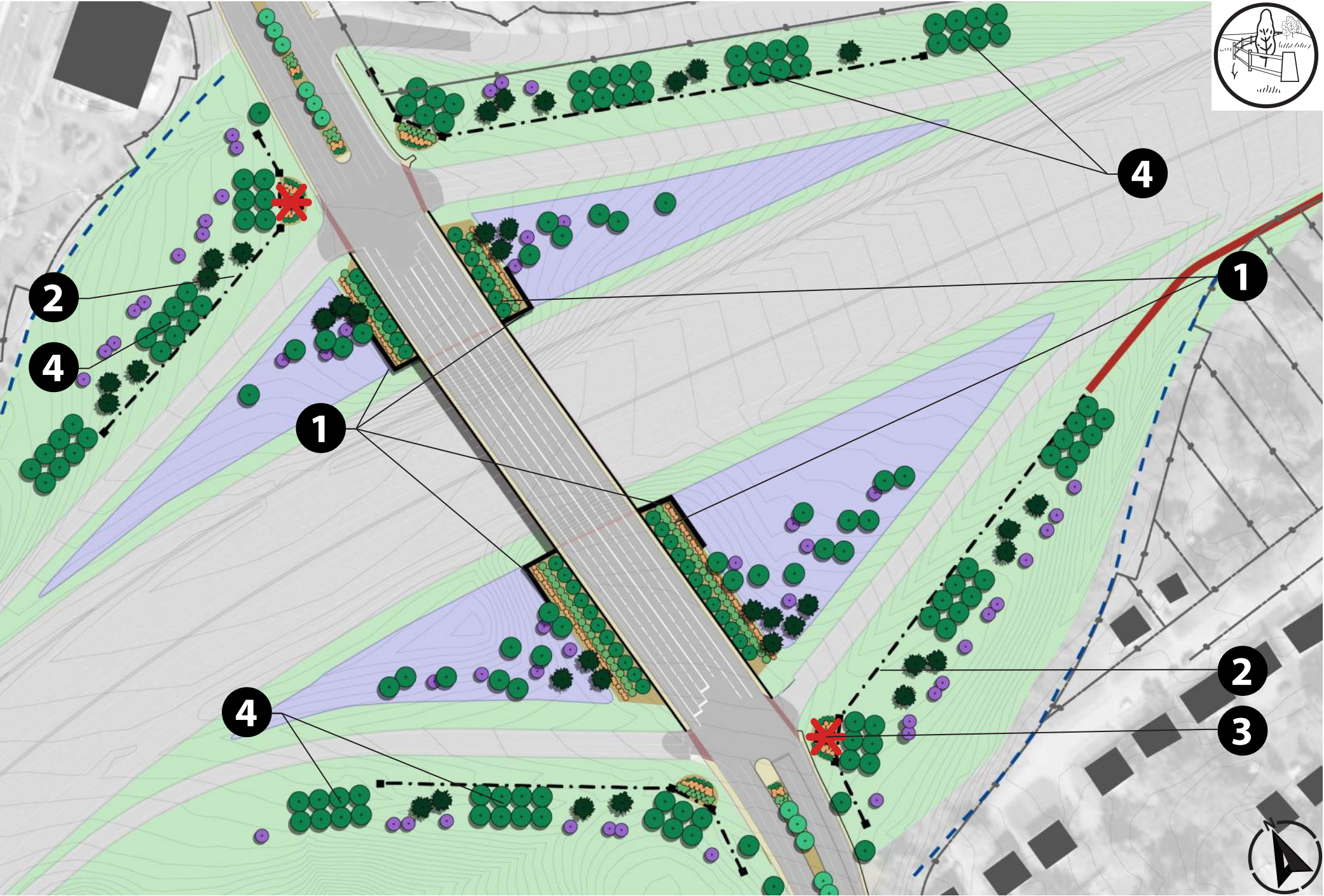
 Flowering Trees

 Evergreen Trees

 Deciduous Trees

 Meadow

 Low Maintenance Native Grass





# Kyles Lane (Fort Wright)

- 1 Planted Landscape Abutment Wall
- 2 Composite White Fence with Stone Pillars
- 3 "Fort Wright" Community Sign Pillar
- 4 Cluster of Autumn Blaze Maples
- 5 Reforestation Zone with Flowering Edge

 Sound Walls

 Existing Highway Fence

 Abutment/Retaining Wall

 Planting Beds

 Composite White Fencing with Stone Pillars

 Community Sign Post

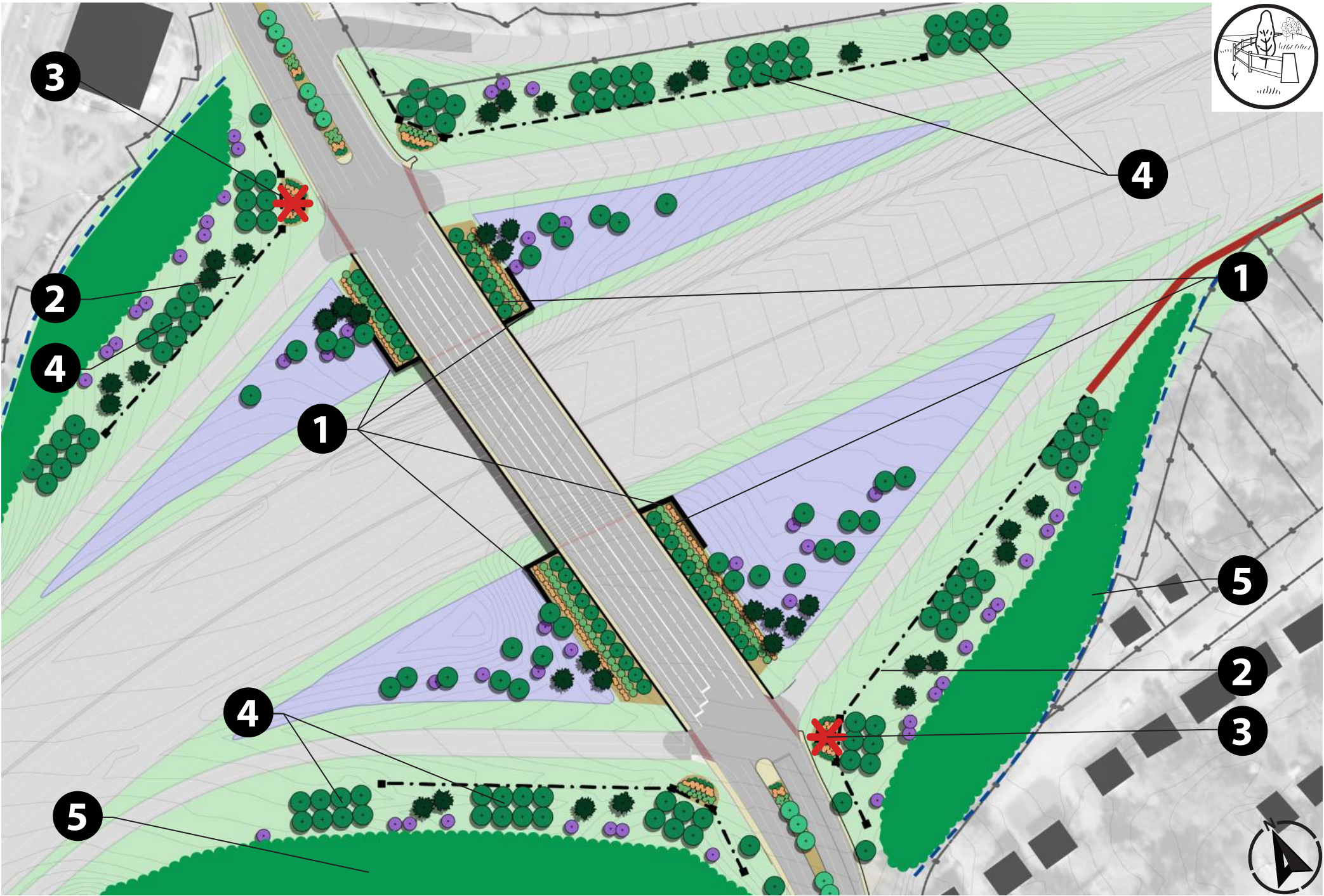
 Flowering Trees

 Evergreen Trees

 Deciduous Trees

 Meadow

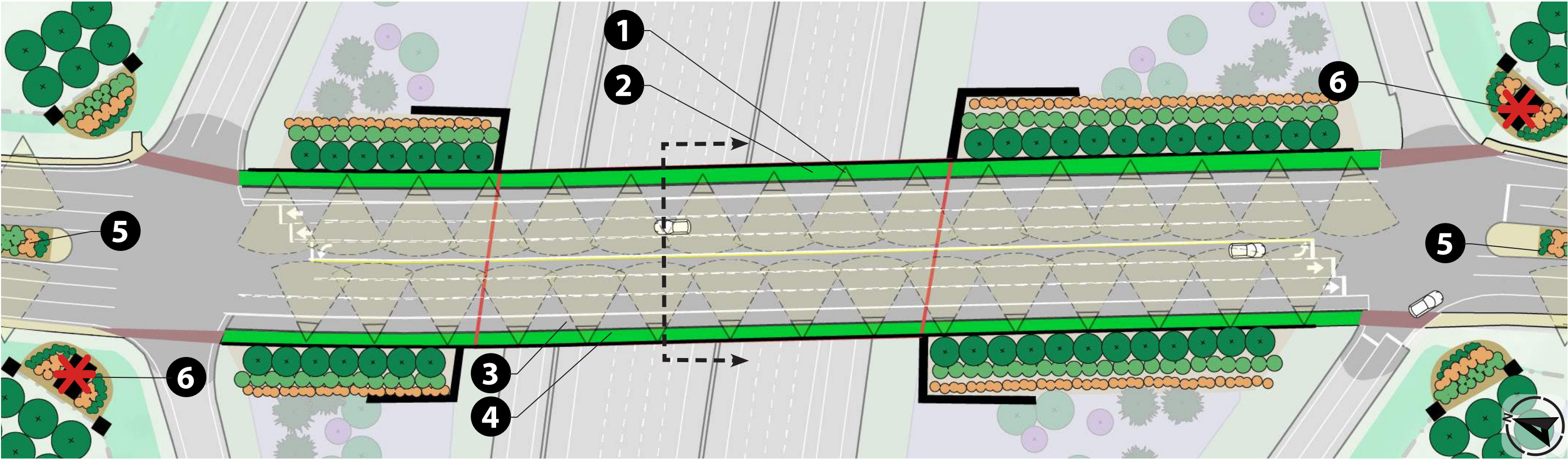
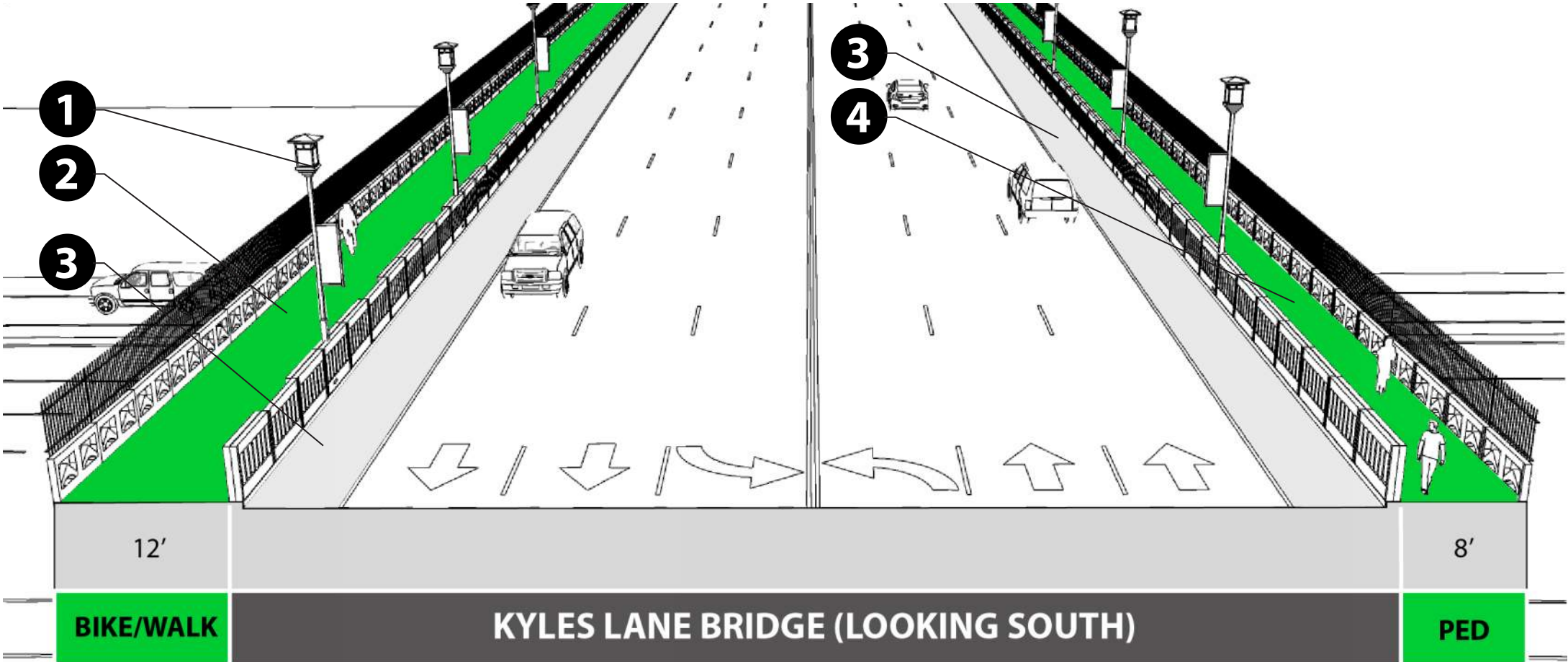
 Low Maintenance Native Grass





# Kyles Lane Streetscape

- 1 Street Lighting
- 2 12' Shared Use Path
- 3 Auxiliary Lane
- 4 8' Sidewalk
- 5 Planted Medians
- 6 Street Level Community Sign







**Southbound View**





**Southbound View**





Plan View



# **Fort Mitchell Interchange Improvements**



# Fort Mitchell Bridge





Option 1



Southbound View



Option 2



Southbound View



# Option 2



Southbound View



# Option 3



Southbound View



# FORT MITCHELL



OPTION 1



OPTION 2





OPTION 3

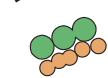


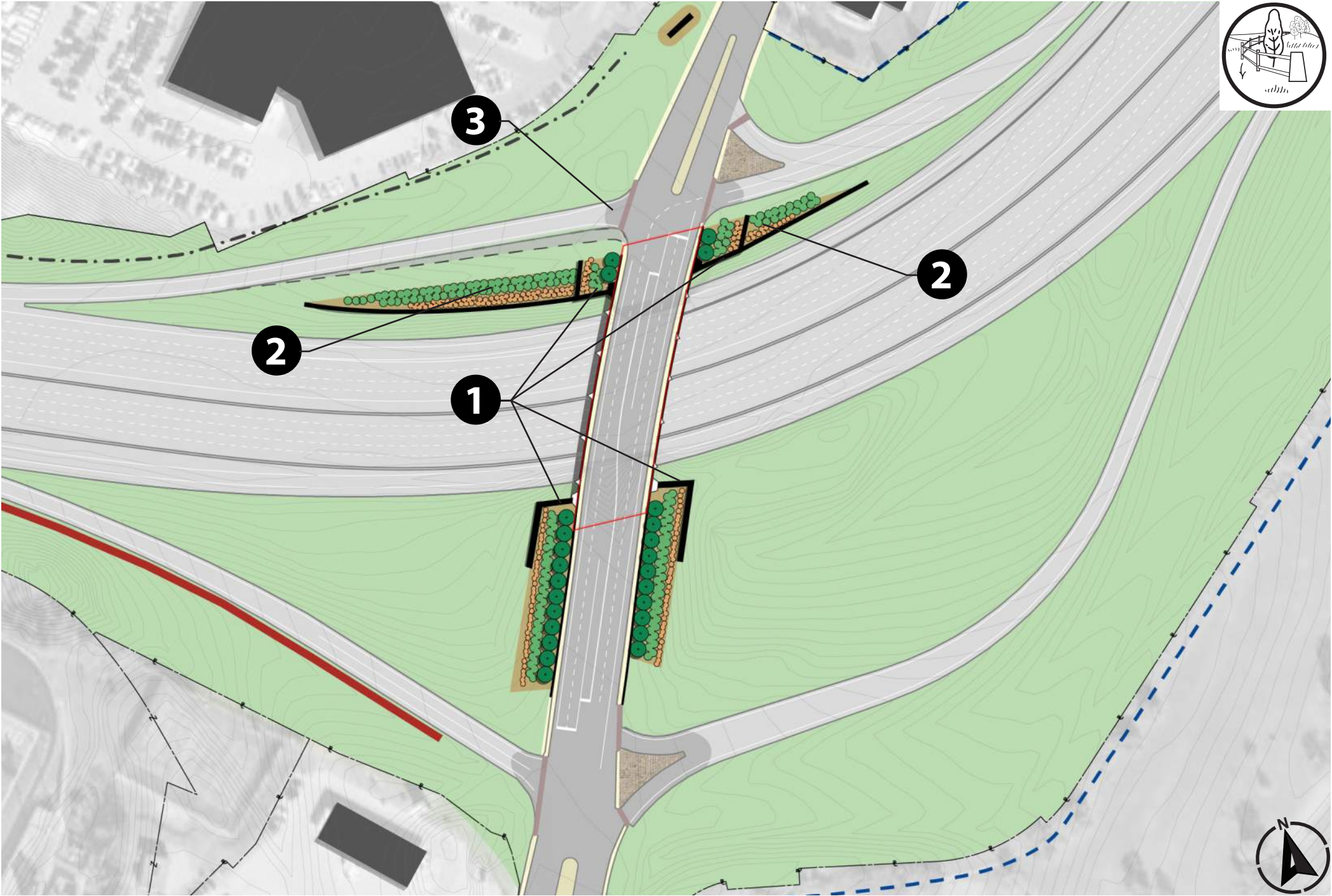
# Dixie Highway

- 1 Planted Landscape Abutment Wall
- 2 Managed Slope with Plantings
- 3 Improved Pedestrian Crosswalk

 Highway Fence

 Abutment/Retaining Wall

 Planting Beds

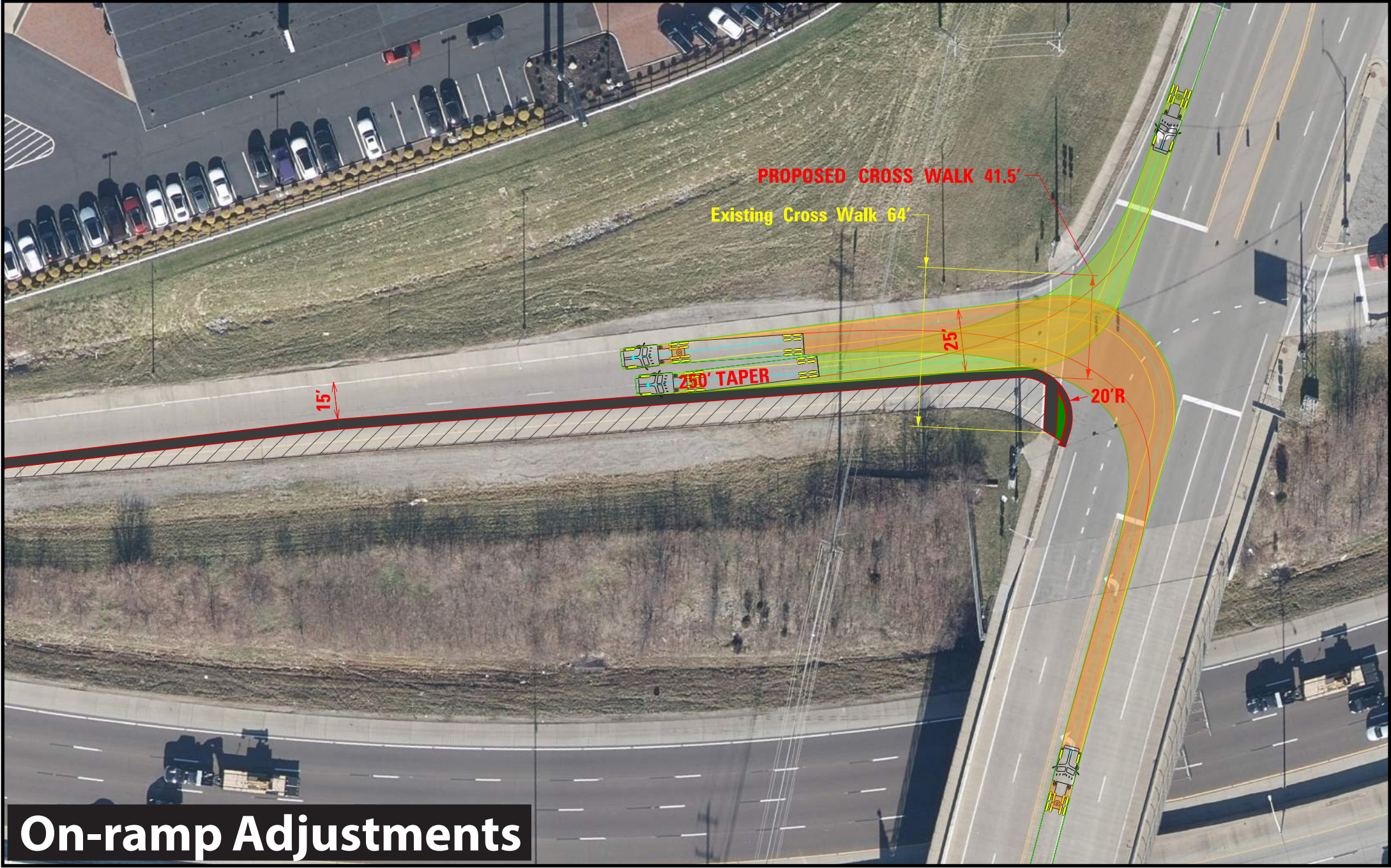




# Dixie Highway

- 1 Planted Landscape Abutment Wall
- 2 Managed Slope with Plantings
- 3 Improved Pedestrian Crosswalk

- Highway Fence
- Abutment/Retaining Wall
- Planting Beds



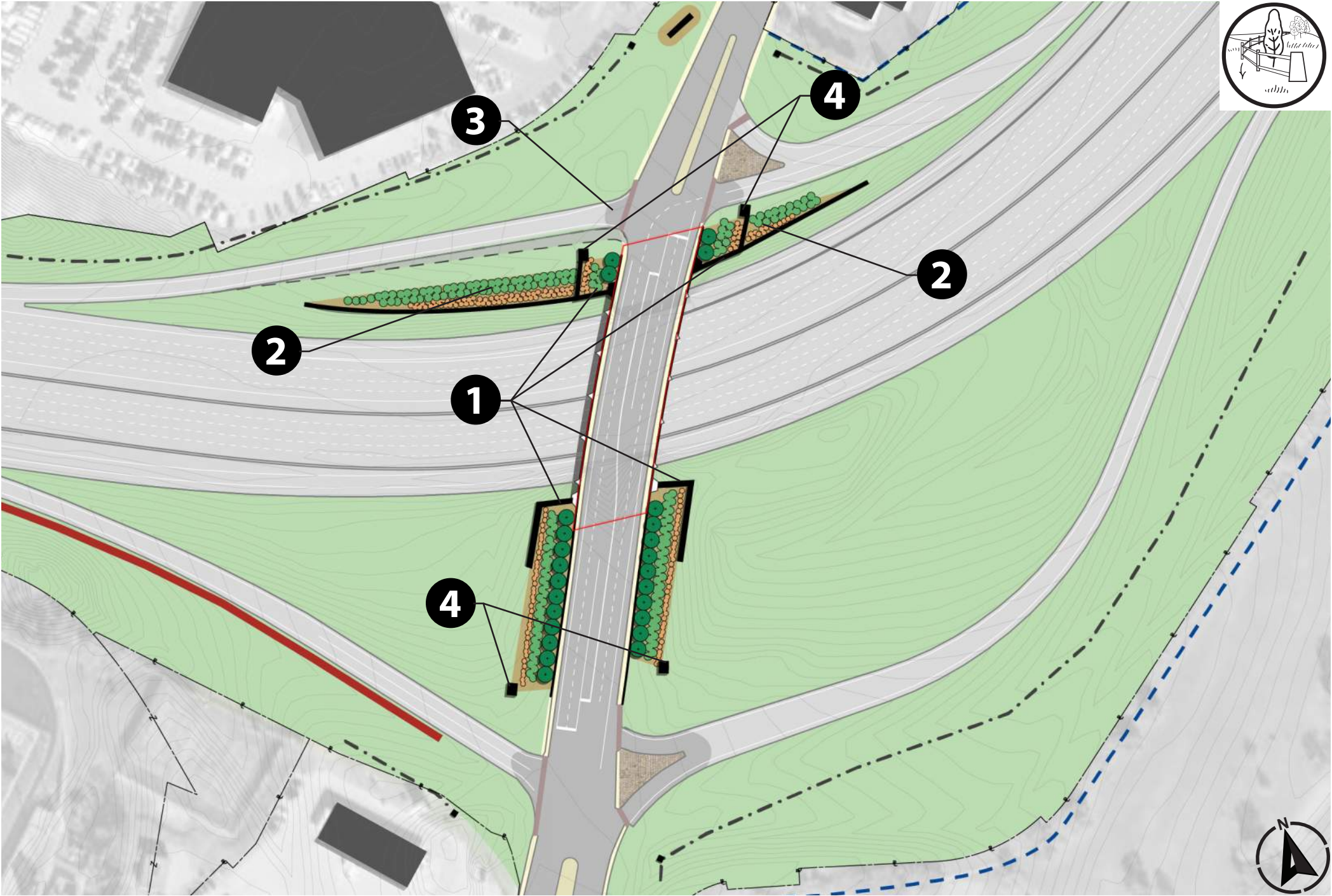
2



# Dixie Highway

- 1 Planted Landscape Abutment Wall
- 2 Managed Slope with Plantings
- 3 Improved Pedestrian Crosswalk
- 4 Large Stone Pillars

- Highway Fence
- Abutment/Retaining Wall
- Planting Beds
- Composite White Fencing with Stone Pillars
- Large Stone Pillars

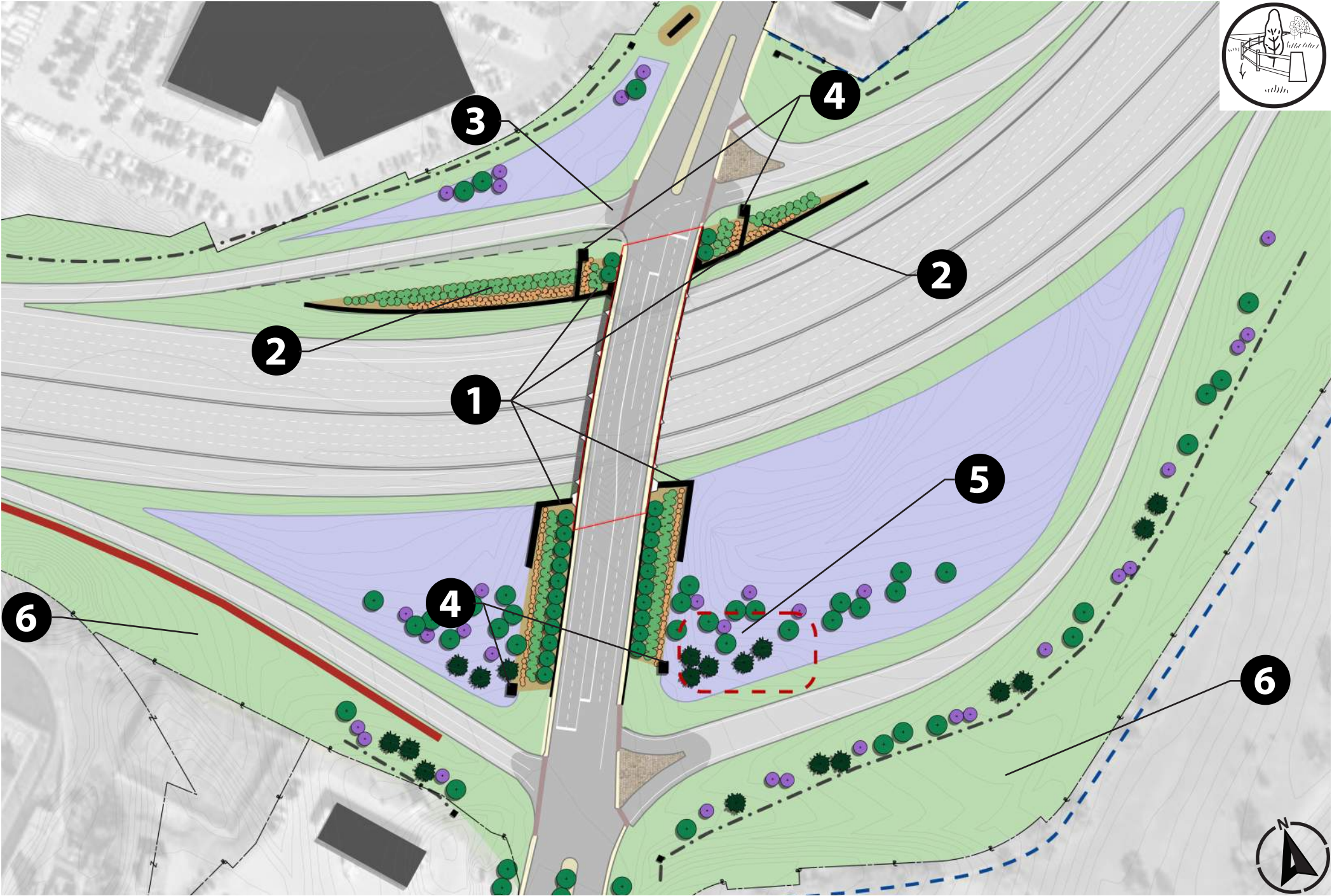




# Dixie Highway

- 1 Planted Landscape Abutment Wall
- 2 Managed Slope with Plantings
- 3 Improved Pedestrian Crosswalk
- 4 Large Stone Pillars
- 5 Maintaining Freedom Tree Grove

- Existing Fence
- Abutment/Retaining Wall
- Planting Beds
- Composite White Fencing with Stone Pillars
- Large Stone Pillars
- Flowering Trees
- Evergreen Trees
- Deciduous Trees
- Meadow
- Low Maintenance Native Grass

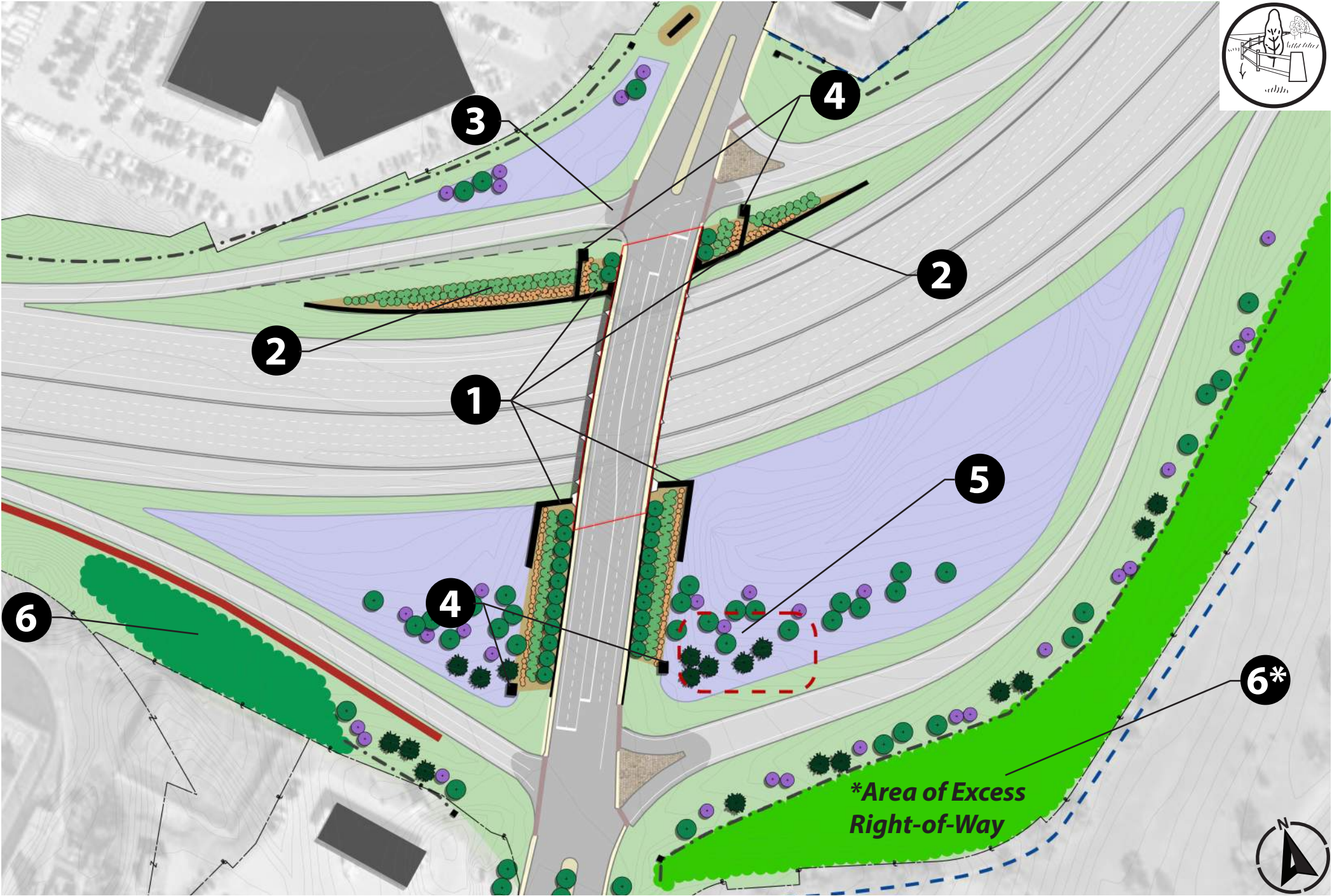




# Dixie Highway

- 1 Planted Landscape Abutment Wall
- 2 Managed Slope with Plantings
- 3 Improved Pedestrian Crosswalk
- 4 Large Stone Pillars
- 5 Maintaining Freedom Tree Grove
- 6 Reforestation Zone with Flowering Edge

- Highway Fence
- Abutment/Retaining Wall
- Planting Beds
- Composite White Fencing with Stone Pillars
- Large Stone Pillars
- Flowering Trees
- Evergreen Trees
- Deciduous Trees
- Meadow
- Low Maintenance Native Grass

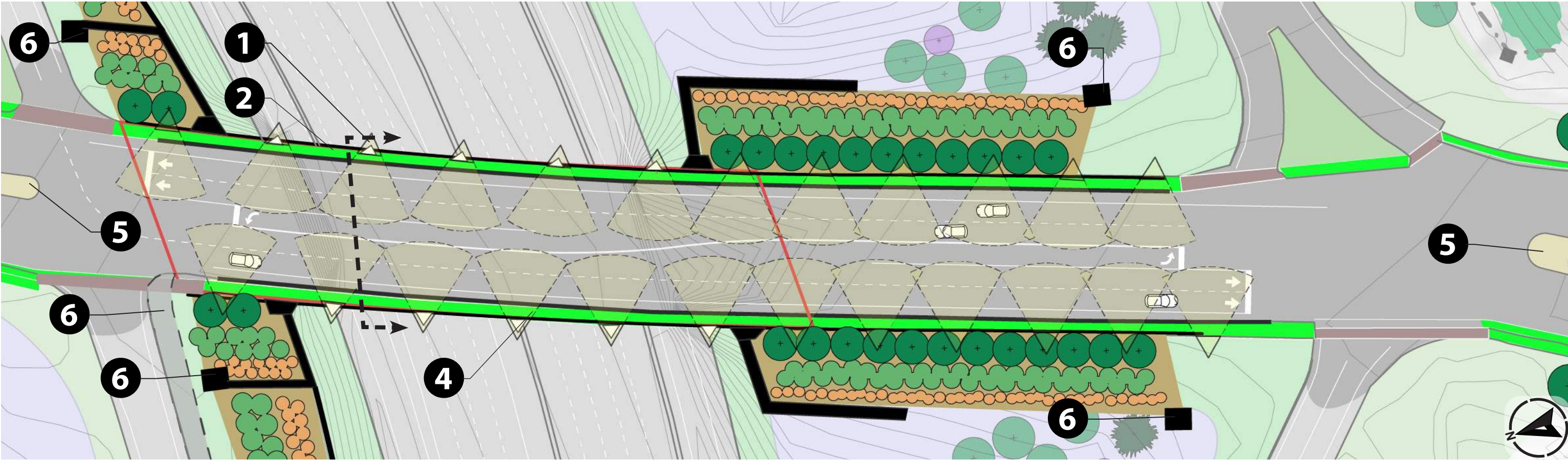
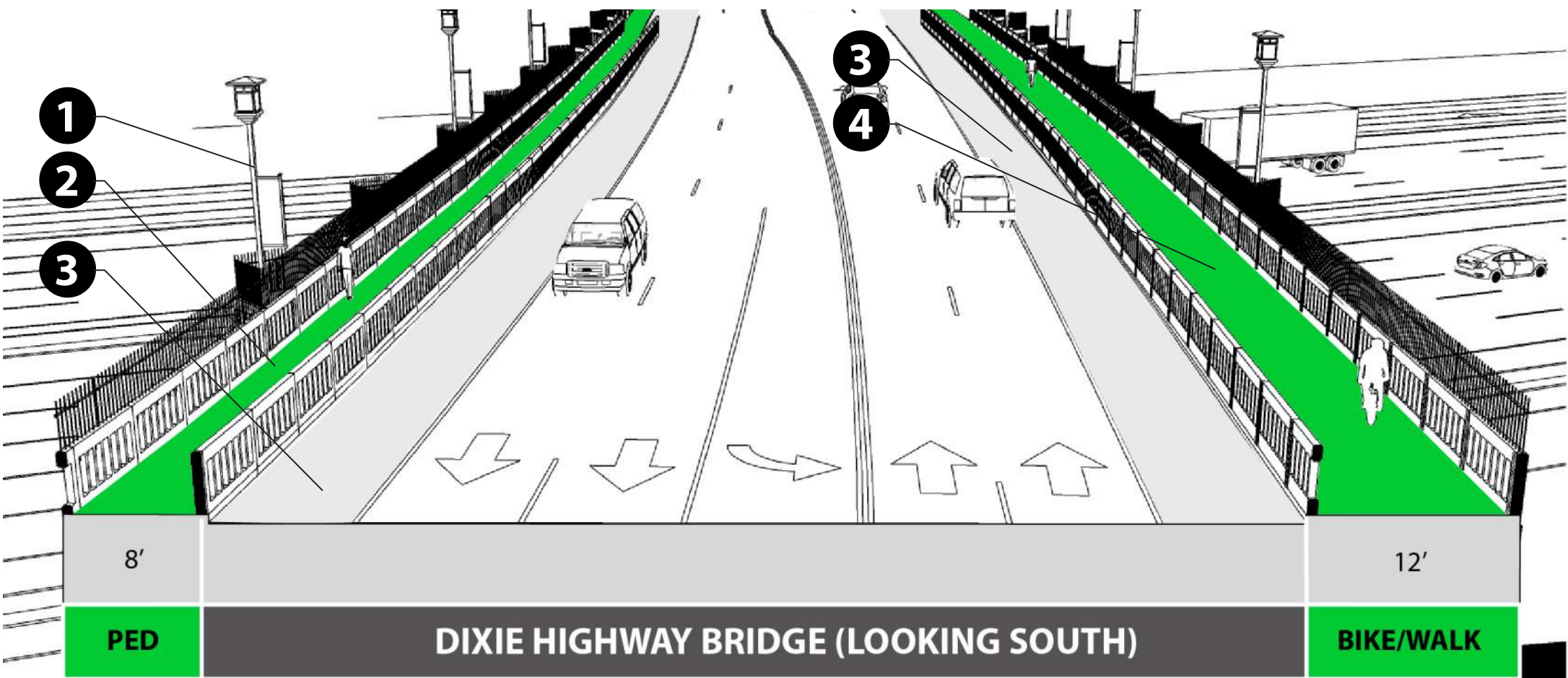




# Dixie Hwy (Fort Mitchell)

## Streetscape

- 1 Street Lighting
- 2 8' Sidewalk
- 3 Auxiliary Lane
- 4 12' Shared Use Path
- 5 Raised Medians
- 6 Stone Pillars
- 7 Improved Pedestrian Crosswalk







**Southbound View**





**Southbound View**





Plan View



# Signage Location



On Bridge



Mounted on  
bridge fence

On Wall



Crest and name  
incorporated on  
front face of wall



# Major Design Elements

## Fort Wright

- Signage
- Abutment Wall Materials
- Bridge Facade
- Fencing
- Planting

## Fort Mitchell

- Signage
- Abutment Wall Materials
- Bridge Facade
- Fencing
- Planting



**THANK YOU**

